

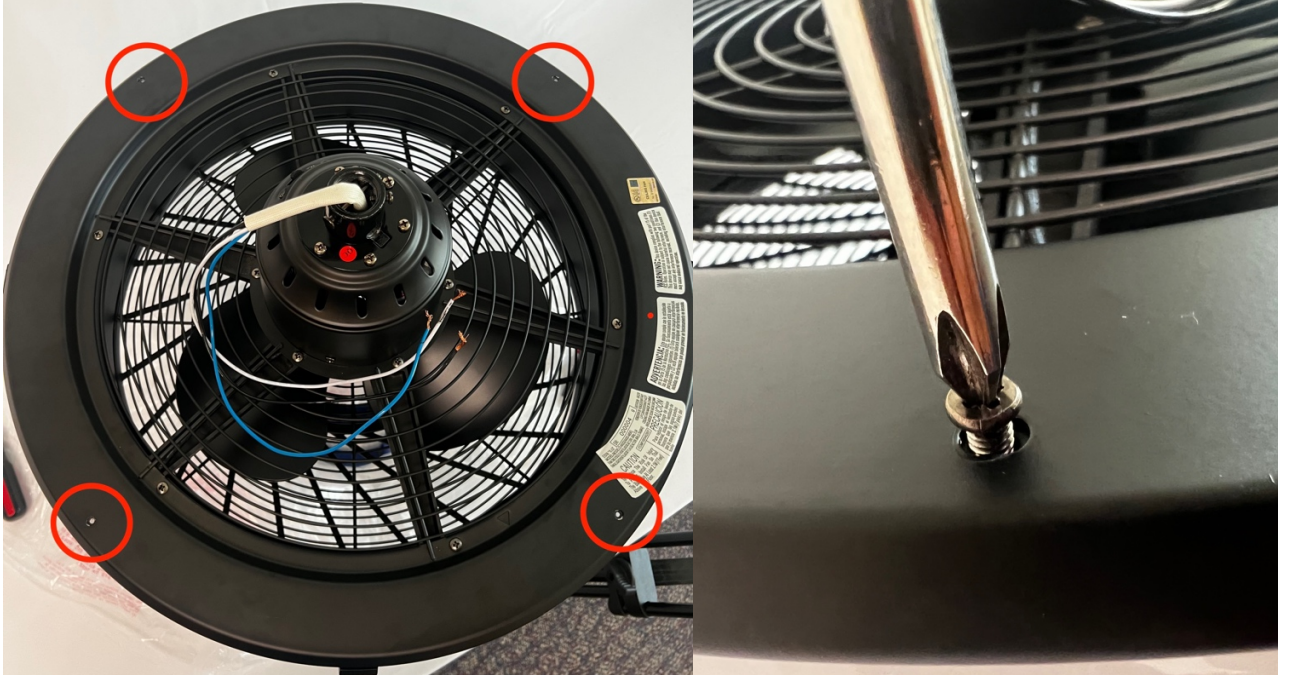
## TUILINE LED STRIP REPLACEMENT INSTRUCTIONS

*(Official Instructional Video In Progress)*

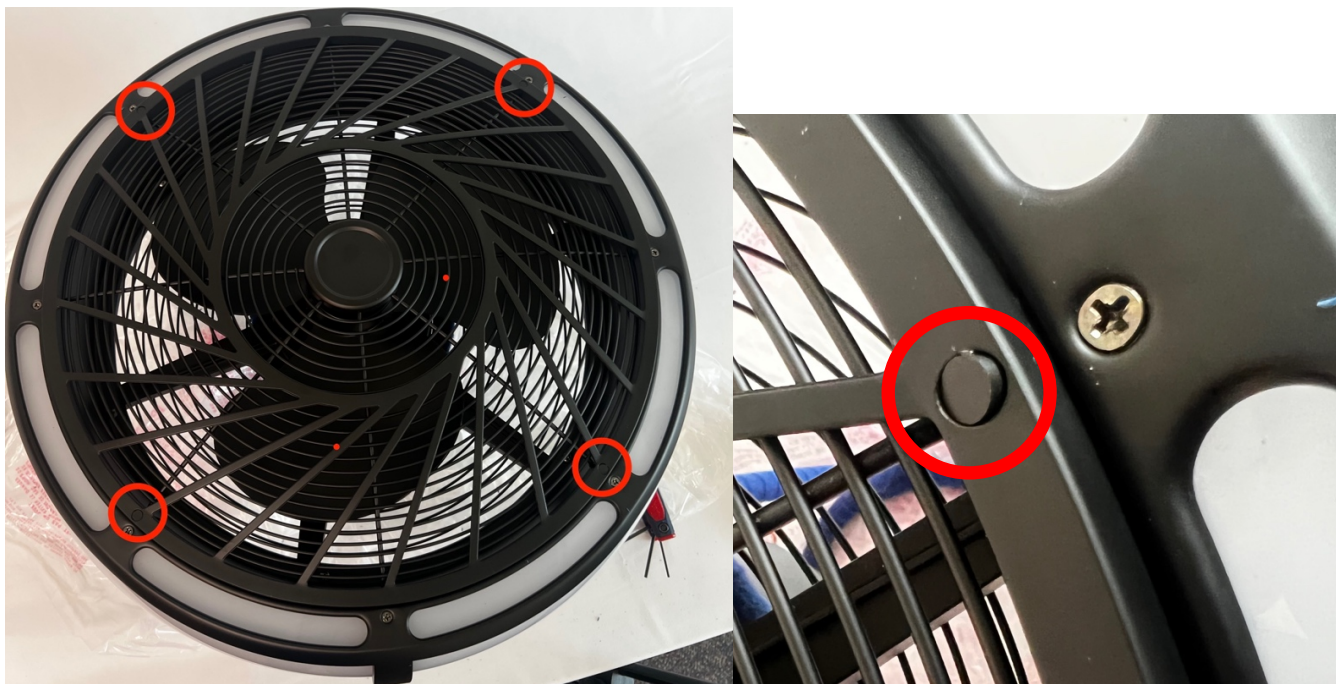
**IMPORTANT! Before working on the fan, you MUST turn off power at the breaker to avoid electric shock.**

The LED strips can be replaced with the fan still hanging from the ceiling. Bringing the fan down may make the process easier but is optional. The photos in the instructions were done with the fan brought down and put on a table.

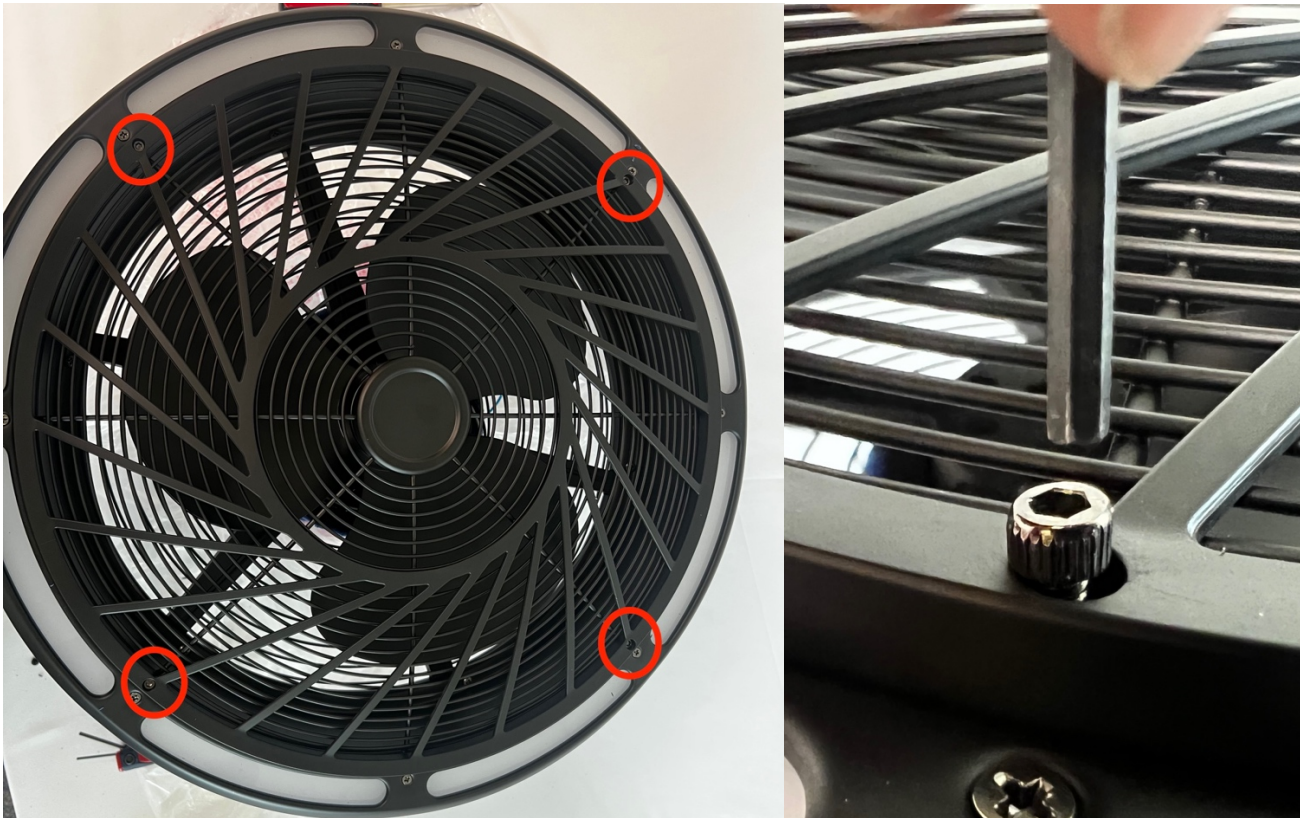
1. On the top of the motor, remove all 4 outer housing screws.



2. On the bottom of the motor, remove all x4 plastic screw covers. If difficult, use the point of a sharp knife.



3. Use the included Hex Wrench to remove all x4 screws.



4. Remove the Decorative Frame



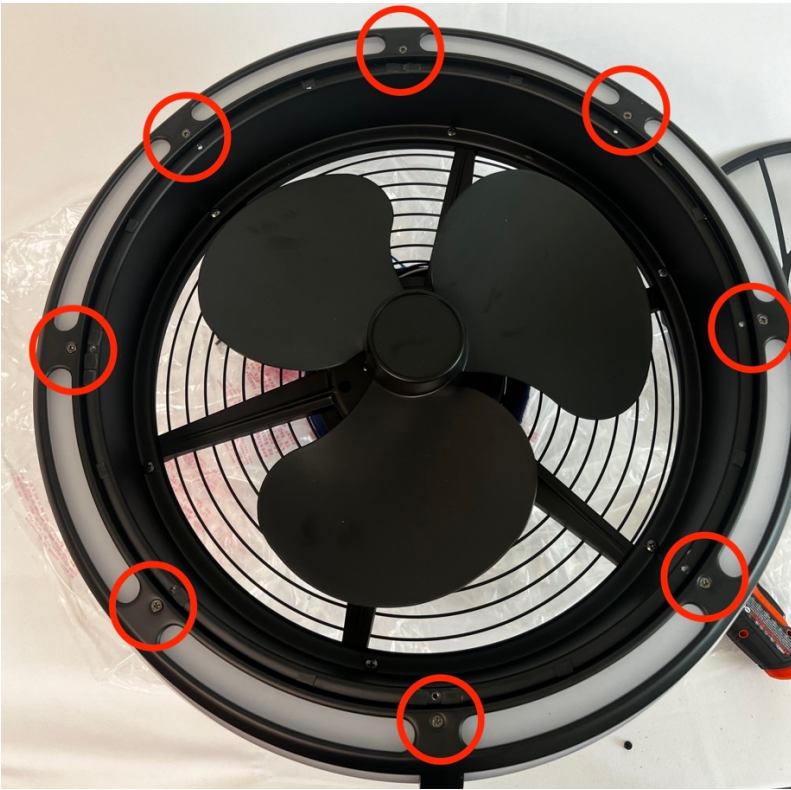
5. Remove all remaining x4 guard screws.



6. Remove the guard.



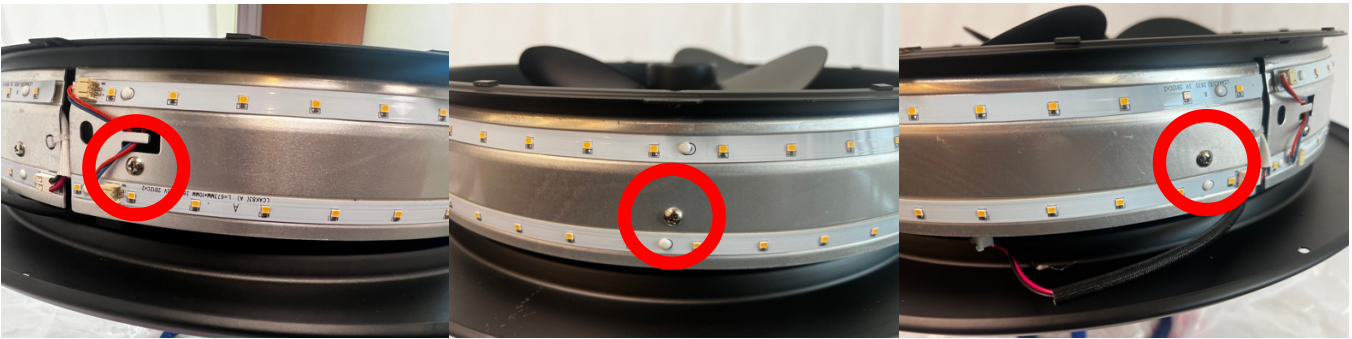
7. Remove all x8 Housing Screws



8. Remove the LED housing to expose the LED strips.



9. Remove all x3 LED strip screws



10. Unplug and remove and dispose of the defective LED strip



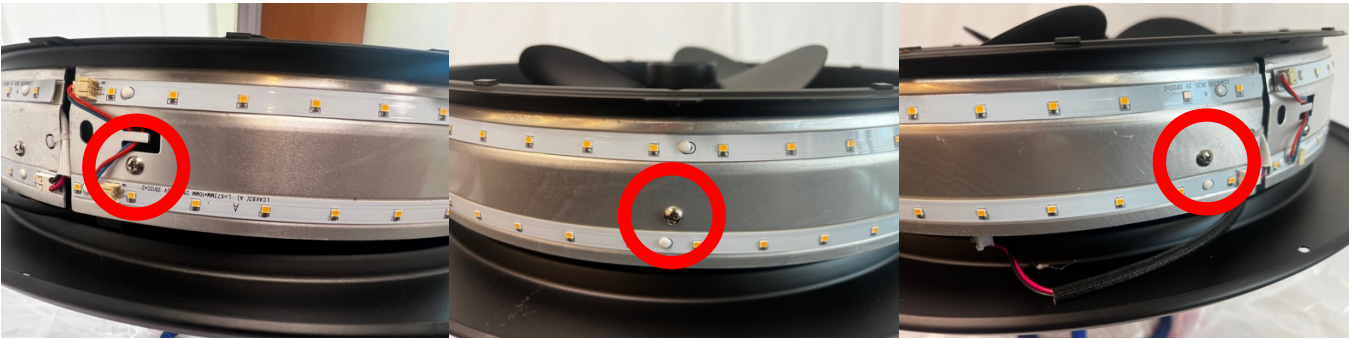
11. Bring the new replacement LED strip and connect the wire connectors.



12. Align the LED strip holes with the screw holes on the motor.



13. Insert and tighten all x3 removed LED strip screws.



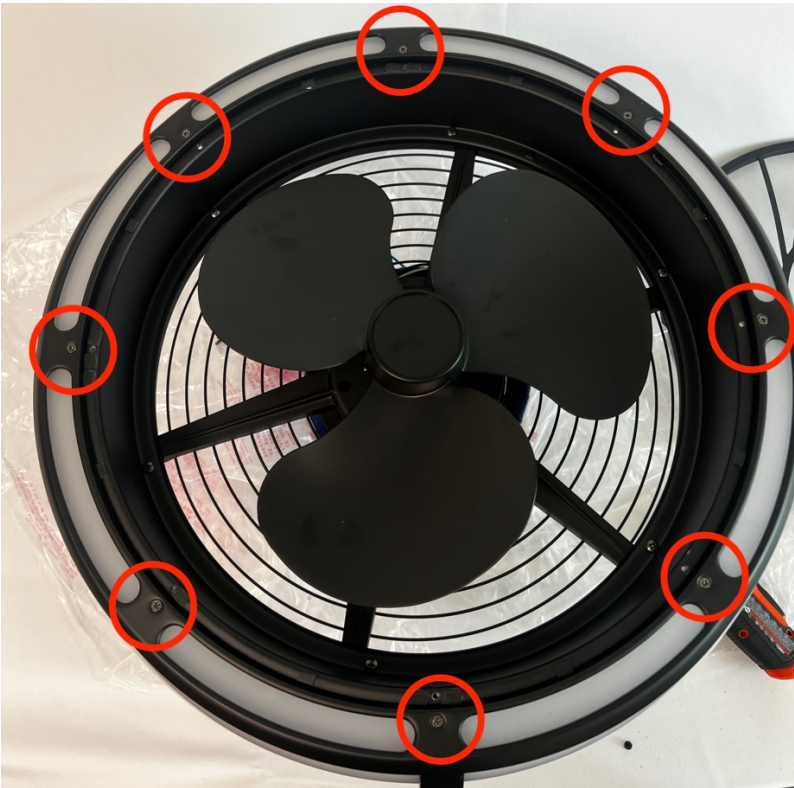
14. Repeat Steps 9-13 for the remaining LED strip.

### REASSEMBLY INSTRUCTIONS

15. Place the LED housing over the LED strips and align with the holes on the motor.



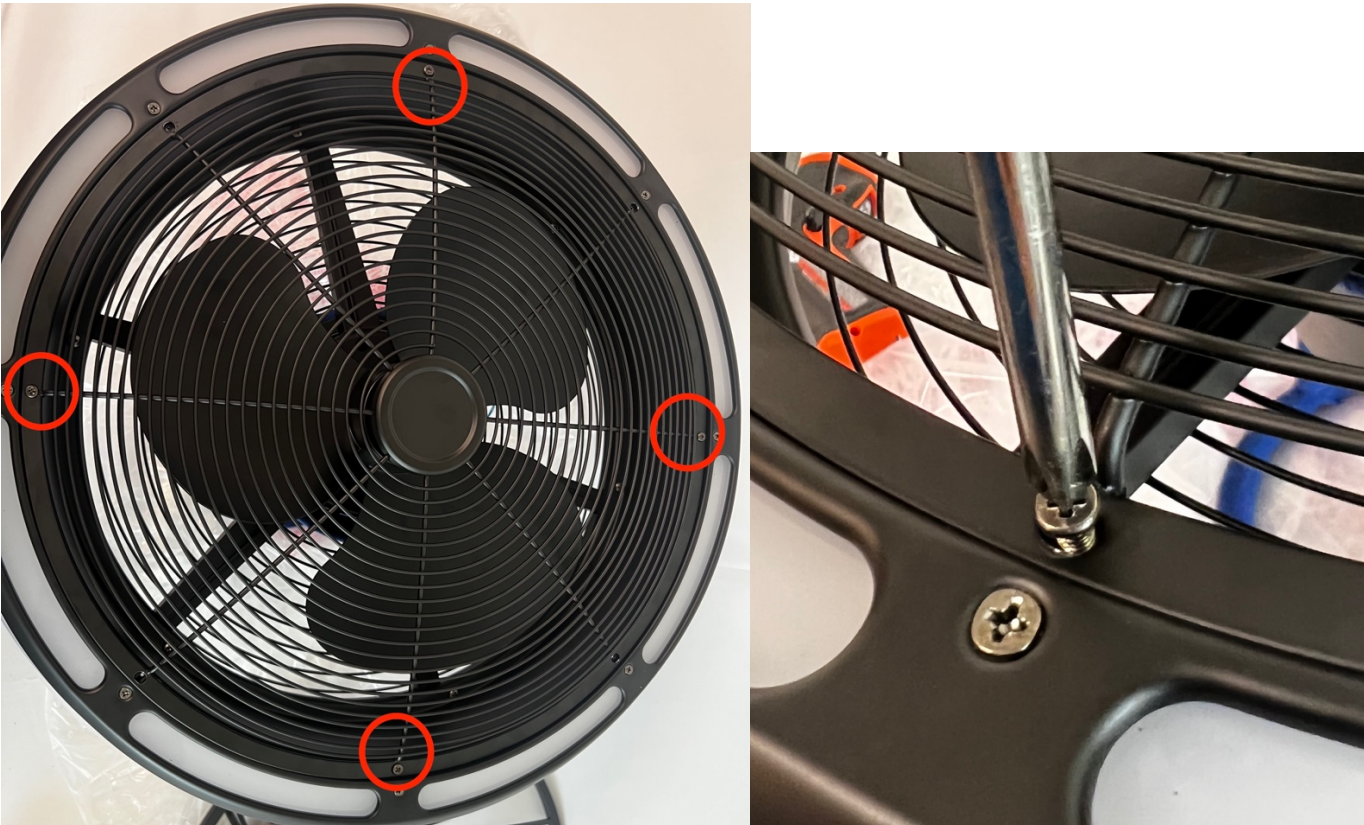
16. Insert and tighten all x8 removed housing screws.



17. Place the guard over the motor and align with the holes.



18. Insert and tighten x4 guard screws, being sure to leave a hole open between each screw.

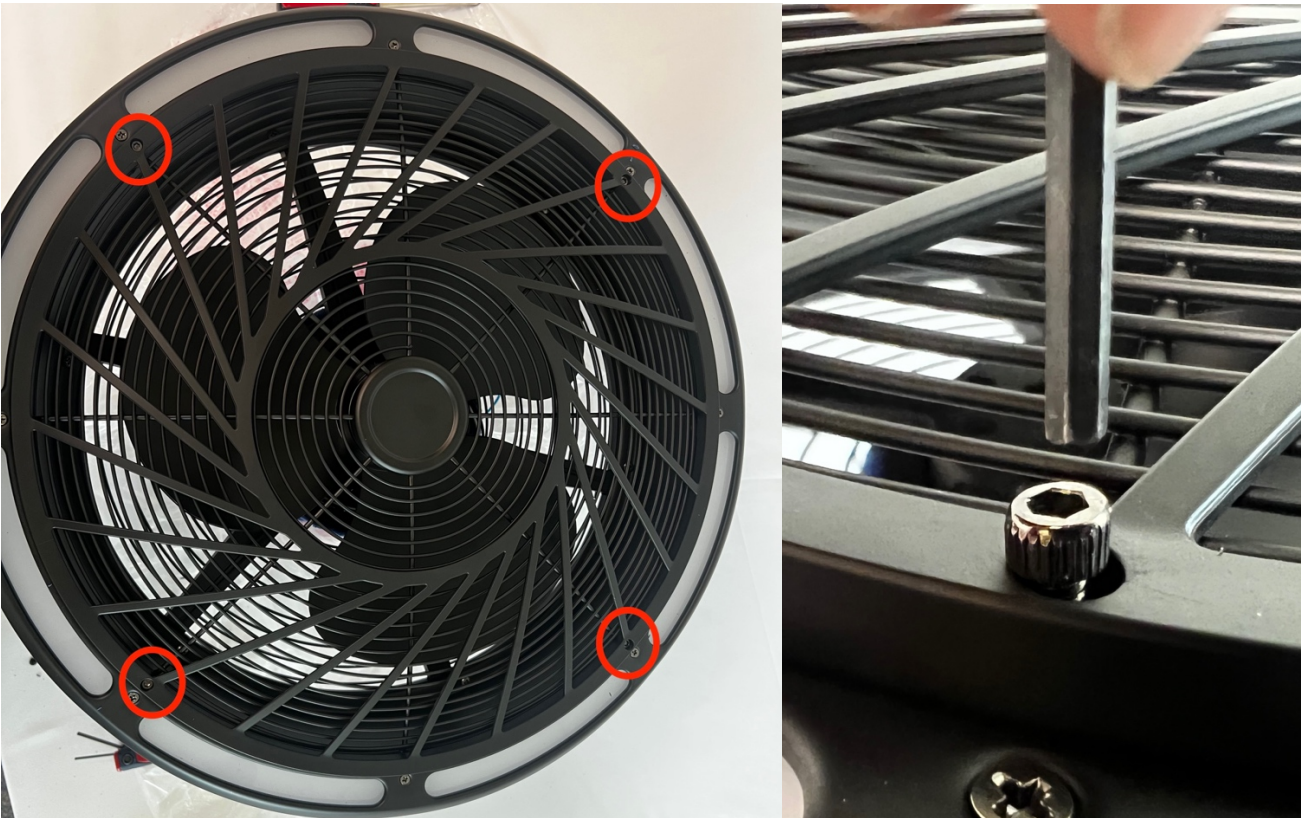


19. Place the Decorative Frame over the guard and align with the remaining holes.

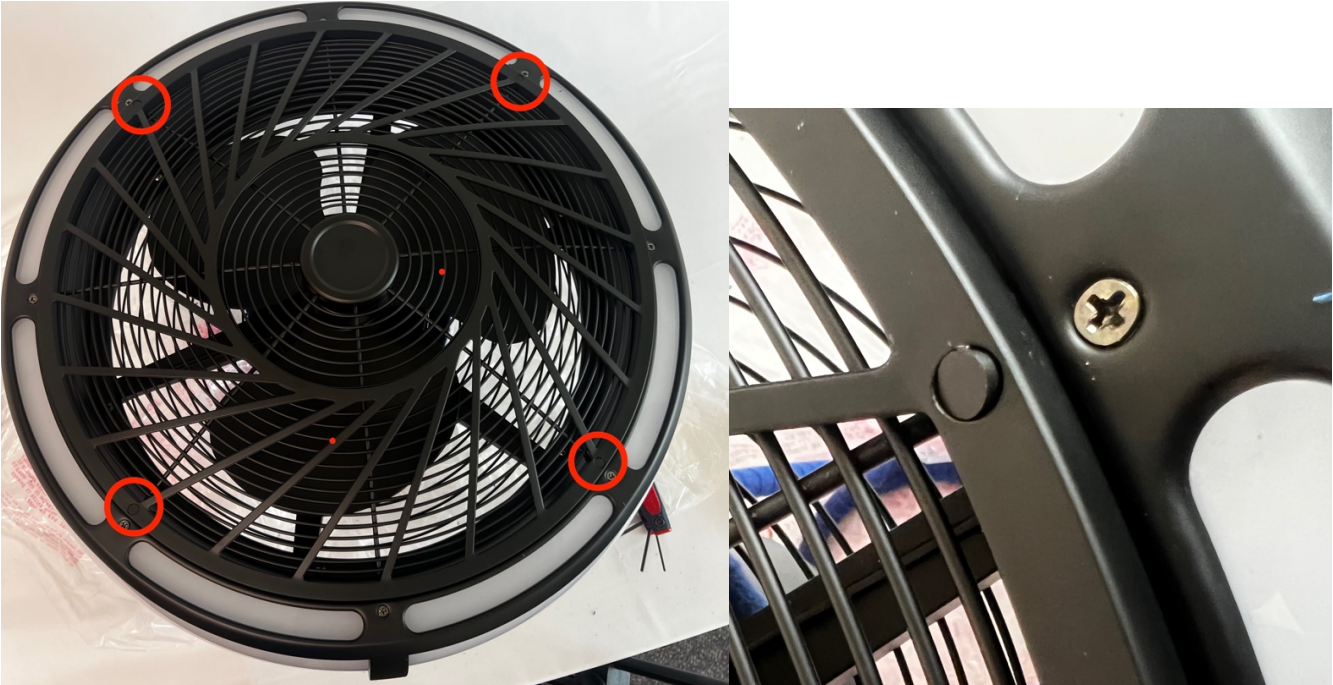




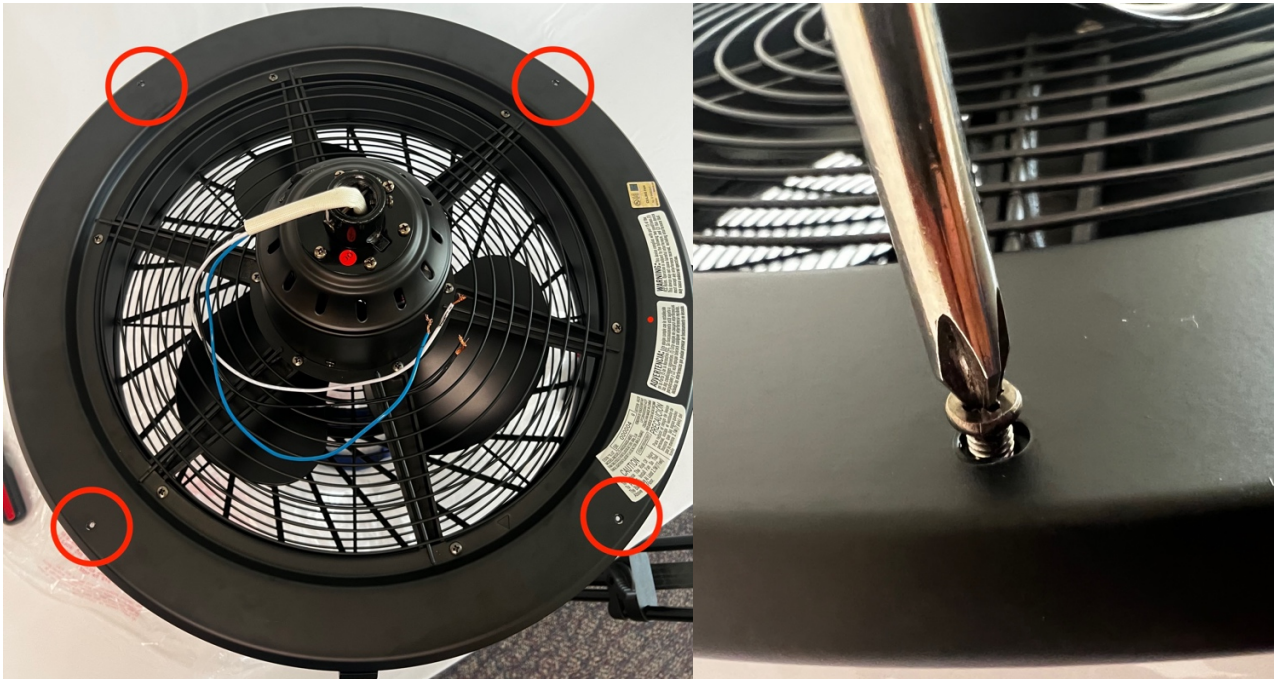
20. Insert and tighten the x4 removed decorative frame screws using the included hex wrench.



21. Push in the 4 plastic screw covers by hand.



22. On top of the motor, insert and tighten all x4 removed outer housing screws.



The re-assembly is complete, and the fan is now ready to reinstall (if brought down) and use.