

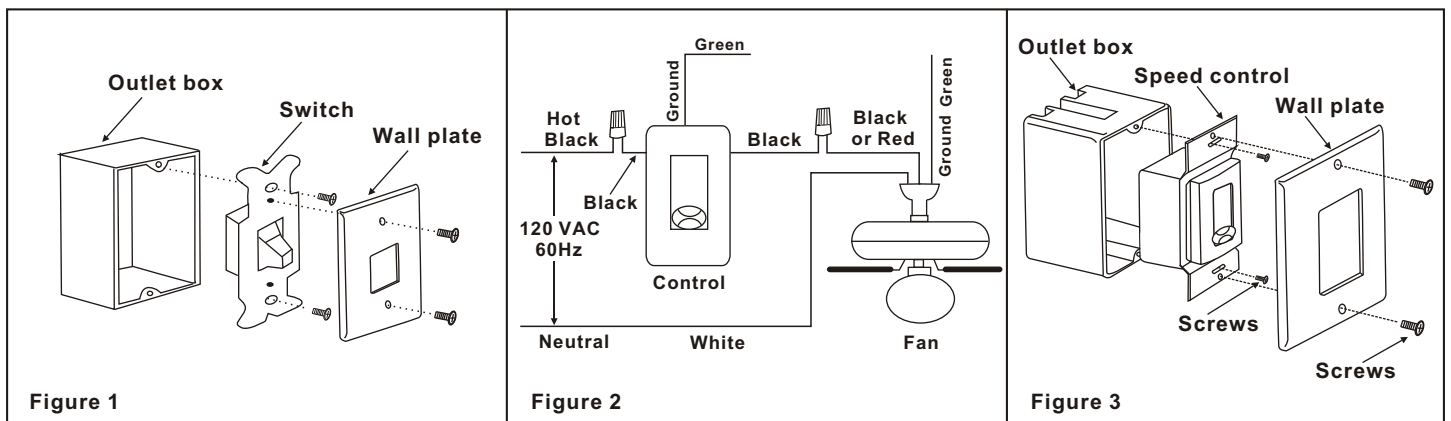
4 SPEED WALL CONTROL INSTALLATION INSTRUCTIONS

**IMPORTANT: READ THESE INSTRUCTIONS CAREFULLY BEFORE
ATTEMPTING TO INSTALL THIS ELECTRICAL DEVICE.**

WARNING

To avoid fire, shock and serious personal injury, follow these instructions:

1. Read your owner's manual carefully, retain owner's manual for future reference.
2. To avoid possible electrical shock, be sure electricity is turned off at the fuse box or circuit breaker panel before wiring.
3. This switch is designed for ceiling fan only, to avoid overheating and possible damage to other equipment, do not install to control receptacle, fluorescent lighting fixture, motor-operated appliance, transformer-supplied appliance or near heat source.
4. All wiring must conform to national and local electrical codes. If you feel you do not have enough electrical knowledge, have a licensed electrician install the control.
5. Total amperage and/ or wattage for your fan should not exceed 120 Volts, 60 HZ, 1.25A (Max.)



1. Turn power OFF at fuse box or circuit breaker and remove the existing wall plate and switch, do not remove wires before noting their position. (Figure 1).
2. Make wire connections (Figure 2) and secure with wire nuts provided.
Remove one of the two insulated wires from the switch. Using the wire connectors provided, attach this wire to one of the black wires on the control.
Remove the other insulated wire from the switch and connect it to the other black control wire.
If your outlet box has a ground wire (green or bare copper) connect the wall transmitter's ground wire to it; otherwise connect the wall transmitter's ground wire directly to one of the screws from the outlet box.
3. Attach the control to the outlet (wall) box and secure with 2 outlet box screws (Figure 3).
4. Attach the wall plate over the wall transmitter and secure with the two screws provided (Figure 3).